

We drive
polymer
distribution.
Easy, smart,
passionate.



Product	Description
Ultradur®	PBT, PBT Blends
Ultradur® BMBcert®	Bio mass balanced PBT, PBT Blends
Ultradur® Ccycled®	Chemical recycled PBT, PBT Blends
Ultradur® RC	Mechanical recycled PBT based on PIR/PCR
Ultradur® rPCF	PBT with reduced Product Carbon Footprint
Ultraform®	POM
Ultraform® BMBcert®	Bio mass balanced POM
Ultramid® A, B, C, Balance	PA66, 6, 6/66, 6.10
Ultramid® Advanced N, T1000, T2000	PA9T, 6T/6I, 6T/66
Ultramid® BMBcert®	Bio mass balanced PA
Ultramid® Ccycled®	Chemical recycled PA
Ultramid® Deep Gloss	PA for high-gloss automotive interiors
Ultramid® Expand	EPA
Ultramid® RC	Mechanical recycled PA based on PIR/PCR
Ultramid® rPCF	PA with reduced Product Carbon Footprint
Ultramid® T KR, 6000, 7000	PA6T/6, 66/6T, PA/PPA
Apec®	PC-HT
Apec® RE	Sustainable PC-HT with attributed bio-circular content, ISCC PLUS certified
Bayblend®	PC+ABS, PC+ASA, PC+SAN
Bayblend® R	PIR/PCR, PC+ABS
Bayblend® RE	Sustainable PC+ABS with attributed bio-circular content, ISCC PLUS certified
Desmopan®	TPU
Desmopan® CQ EC	TPU bio-based solutions
Desmopan® CQ MBC	TPU bio-circular / mass-balancing solutions
Desmopan® CQ RC	TPU recycling solutions
Makroblend®	PC+PBT, PC+PET
Makroblend® RE	Sustainable PC+PET with attributed bio-circular content, ISCC PLUS certified
Makrolon®	PC
Makrolon® R	PIR/PCR, PC
Makrolon® RE	Sustainable PC with attributed bio-circular content, ISCC PLUS certified
Texin®	TPU



Product	Description
Akulon®	PA66
Arnite®	PET
Arnitel®	TPC
Durethan® B	PA6
Durethan® Blue	Combining PA6 derived from biomass or bio-waste with post-industrial glass fiber and available based on chemical recycling
Durethan® ECO	PA6, PA66 with post-industrial glass fiber
ForTii®	PPA (PA4T)
Novamid®	PA6, PA66
Nylatron®	TPC
Pocan®	PBT, PBT Blends
Pocan® ECO	PBT with post-industrial glass fiber (ECO) and PBT bio circular, mass balanced in addition post-consumer PET (ECO T)
Stanyl®	PPA (PA4T)
Xytron®	PPS
Clearlux®	MABS
K-Resin®	SBC
Luran®	SAN
Luran® ECO	Sustainable SAN with attributed bio-circular content, ISCC PLUS certified
Luran® HH	AMSAN
Luran® S	ASA
Luran® S ECO	Sustainable ASA with attributed bio-circular content, ISCC PLUS certified
Luran® S/C	ASA+PC
NAS®	SMMA
NAS® ECO	Sustainable SMMA with attributed bio-circular content, ISCC PLUS certified
Styroflex®	SBC thermoplastic elastomer
Styroflex® ECO	Sustainable SBC with attributed bio-circular content, ISCC PLUS certified
Styrolux®	SBC
Styrolux® ECO	Sustainable SBC with attributed bio-circular content, ISCC PLUS certified
Terblend® N	ABS + PA
Terblend® S	ASA + PA
Terlux®	MABS
Terlux®ECO	Sustainable MABS with attributed bio-circular content, ISCC PLUS certified
Terlux® HD	MABS (Healthcare)
Zylar®	MBS
Zylar®ECO	Sustainable MBS with attributed bio-circular content, ISCC PLUS certified





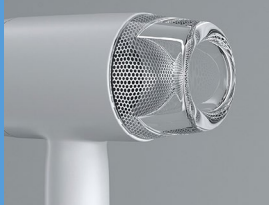
Product	Description
Alcom®	Customer specific compound solutions based on various polymers (Prime and ECO based)
Alcom® 3D	Applicable for production of filaments for Fused Deposition Modeling (FDM)
Alcom® EC	Electrically Conductive
Alcom® LB	Light blocking and high reflection
Alcom® LD/LDDC/LG/LIR	Light diffusion /Light diffusion deep colour /Light guiding /Light infrared
Alcom® MED	Medical, pharmaceutical and diagnostic applications
Alcom® TC	Thermally conductive
Alcom® WP	Wear protect
Alfater XL®	TPV (PP+EPDM)
Alfater XL® ECO	Sustainable solutions of TPV (PP+EPDM)
Altech®	PA6, PA66, PP, PS, ABS, PC, PC Blends, SAN, etc.
Altech® ECO / IQ	Sustainable solutions based on PA6, PA66, PP, PC, PC-Blends, ABS etc.
Altech NXT PP®	Glass fiber reinforced PP compounds
Cellidor®	CP, CAB based on Cellulose esters from sustainable sources
Tedur®	Linear PPS
WIC	PP, PA6, PA66 reinforced with recycled carbon fiber
WIPAFLEX	PP/PE/EPDM mineral filled recycled compounds
WIPELAST	PP/EPDM mineral filled recycled compounds

The best solution for your industry



Building & Construction

- Exterior and aesthetic interior spaces for functional design
- Antibacterial protection in sanitary facilities according to ISO 22196
- High understanding of the building and construction industry regulations



Electrical & Electronics

- Light- and lighting technology:
 - Reflectors, diffusing discs, light guides, housings
 - Optics and lenses
 - Operating elements and displays
- EMI and ESD shielding elements
- Thermal conductive and flame retardant solutions for housings of electronics
- Components and housings for household appliances



Healthcare

- Medical grade plastics according to VDI guideline 2017 MGP
- Polymers for medical devices, invitro diagnostics and pharmaceutical packaging as well as biopharma applications and laboratory equipment
- Customised compound solutions
- Support in regulatory questions



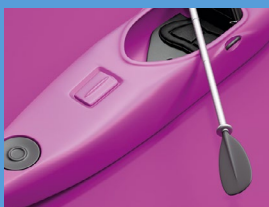
Mobility

- Applications in e-mobility, railway and other transport systems
- Components for lighting systems
- Thermal management of components
- Lightweight applications (under the hood, vehicle interior)
- Aesthetical and structural parts
- Bellows and air ducts



Packaging

- High expertise in cosmetic packaging
- Active and sustainable packaging concepts in food applications
- Bag in box systems and caps and closures
- Extended shelf life food packaging



Sports & Leisure

- Huge array of high performance polymers for protective or lightweight design
- Solutions for protective gear, bikes, scooters etc.
- General outdoor equipment for every usage in an increasing array of sporting and leisure activities



Sustainable Solutions

- Comprehensive portfolio for solutions on reduction of CO₂ footprint in plastic applications e.g. for automotive, packaging and E & E
- Bio based plastics, made by renewable raw material or by mechanical or chemical recycled material
- Closed loop solutions for supporting circular economy

ALBIS worldwide

Austria · Brazil · China · Czech Republic
France · Germany · Hungary · India · Israel
Italy · Malaysia · Morocco · Netherlands
Poland · Romania · Spain · Sweden
Switzerland · Tunisia · Turkey · UK · Vietnam

Contact us

Tecnomatiz Resinas
Rua Paracatu, 740 - Parque Imperial Brazil-SP, 04302-021 São Paulo
Brazil- 04302-021 São Paulo
vendas@tecnomatiz.com.br
albis.com

Head Office

ALBIS Distribution GmbH & Co. KG
Mühlenhagen 35
20539 Hamburg
Germany
T +49 40 78105 0
info@albis.com
albis.com

® indicates a registered trademark, ™ indicates an unregistered trademark, each belonging to the respective/indicated brand owner



Visit us on LinkedIn



Newsletter · Sign up

