

# ALTECH® REP/REG

Reprochip/Regrind made of Polyamide



## Global competence and reliability

Already for over 25 years we deliver experience, competence, quality and reliability to a global market as a supplier of thermoplastic products.

With production sites in Europe and the USA we have specialized in the recycling of polyamide 6- and polyamide 66- residues and offer compounding as an additional service to our customers.

## Wide range of applications

Our high quality recycled products are primarily used as compounding feedstocks, but are also suitable for the production of yarns and fibers. The main field of applications in the plastics industry are e.g. Automotive, Electrical and Electronics, Building as well as Sports/Leisure.

## High quality standards

As it is our objective to provide the utmost in customer satisfaction, our primary focus areas are quality, service, cost, productivity and safety. Quality management in our own laboratories is a standard. All substances in our products have been preregistered with REACH. Our production sites as well as our laboratories are ISO 9001 certified. The laboratory in the USA has an additional AALA certificate.

## Everything in-house

From sourcing via production to sales. Everything is kept in-house to make sure that knowledge is exactly in place where it is needed. Our production facilities include melt filtered pelletization, agglomeration, grinding, drying, crystallization, screening, blending, baling / repacking.

## Contract manufacturing

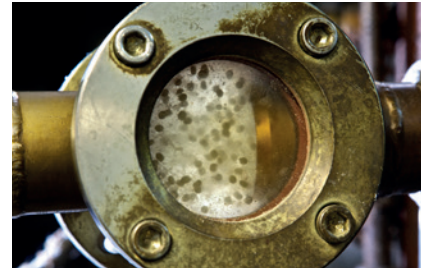
Each of our production processes is also offered as contract manufacturing service.

- **Pelletization**

On our extruders we are able to transform filament- and fabric waste back into a granule through a melting (including filtration) process. Other possible raw materials can be regrinds or a combination of them and the above.

- **Grinding / Crushing**

On our grinding lines, we process rocks / lumps, strands, filmwaste etc. and bring them into a for you workable form. Metal detection / separation is a matter of course. Other services offered are baling / repacking and tube cutting.



## Polyamide

compounding feedstocks	To2 range	mixed color	natural	unfilled	glass/min. filled	low Rv	medium Rv	high Rv	heat stabil.
reprocessed chips	0% 0.3-0.5% 0.8-1.5%	•	•	•		•	•	•	•
regrinds	0% 0.3-0.5%	•	•	•	•	•	•	•	•
rocks / lumps	0% 0.3-0.5%	•	•	•	•	•	•	•	•
first grade chips	0% 0.3%		•	•		•	•	•	•
off / wide spec chips	0% 0.3% 1.5%		•	•		•	•	•	•

Polyamide is one of the most significant raw materials for the engineered resin industry. Key attributes are high impact strength, good slip and abrasive performance as well as outstanding thermal properties.

As our raw materials are residue materials from textile-, technical fiber- or film applications and as we keep those groups separated from each other, our products have different but consistent viscosity levels. Products made from textile grades usually have a low Rv of 2.3 – 2.5, other raw materials lead to medium Rv of 2.6 – 2.7, higher Rv materials will have values of 2.8 – 2.9. More a specialty are high viscosities starting at Rv 3.0 and higher.

ALBIS\_1016

### HEAD OFFICE

ALBIS PLASTIC GmbH  
Mühlenhagen 35 · 20539 Hamburg  
Tel.: +49 40 7 81 05-0 · Fax: +49 40 7 81 05-361  
info@albis.com · www.albis.com

In North America, ALTECH<sup>®</sup> E<sup>CO</sup> compounds are exclusively marketed and manufactured by ALBIS Barnet Polymers LLC.

ALBIS Barnet Polymers LLC  
1720 East Main Street · Duncan · SC 29334, USA  
Tel: (+1) 864 486 0071 · Fax: (+1) 864 486 0073  
info@albisbarnet.com · www.albisbarnet.com



The information contained in this publication is based on our current knowledge and experience. However, due to the large number of factors that can influence our products when they are processed and used, it does not exempt processors from carrying out their own investigations and tests. Legally binding assurances of specific properties or of suitability for a specific purpose cannot be derived from our information. The recipient of our products is responsible for observing any applicable industrial rights as well as the existing laws and regulations.