

We drive  
polymer  
distribution.  
Easy, smart,  
passionate.



| Product                            | Description  |
|------------------------------------|--|
| Ecovio®                            | PBAT, PLA  |
| Ultradur®                          | PBT, PBT Blends  |
| Ultradur® BMBcert®                 | Bio mass balanced PBT, PBT Blends  |
| Ultradur® Ccycled®                 | Chemical recycled PBT, PBT Blends  |
| Ultradur® RC                       | Mechanical recycled PBT based on PIR/PCR   |
| Ultradur® rPCF                     | PBT with reduced Product Carbon Footprint  |
| Ultraform®                         | POM  |
| Ultraform® BMBcert®                | Bio mass balanced POM  |
| Ultramid® A, B, C, Balance         | PA66, 6, 6/66, 6.10  |
| Ultramid® Advanced N, T1000, T2000 | PA9T, 6T/6I, 6T/66   |
| Ultramid® BMBcert®                 | Bio mass balanced PA   |
| Ultramid® Ccycled®                 | Chemical recycled PA   |
| Ultramid® Expand                   | EPA  |
| Ultramid® RC                       | Mechanical recycled PA based on PIR/PCR  |
| Ultramid® rPCF                     | PA with reduced Product Carbon Footprint   |
| Ultramid® T KR, 6000, 7000         | PA6T/6, 66/6T, PA/PPA  |
| Ultrason® D                        | PESU-/PPSU-/PSU-Blends   |
| Ultrason® E                        | PESU   |
| Ultrason® P                        | PPSU   |
| Ultrason® S                        | PSU  |
| Apec®                              | PC-HT  |
| Apec® RE                           | Sustainable PC-HT with attributed bio-circular content, ISCC PLUS certified  |
| Bayblend®                          | PC+ABS, PC+ASA, PC+SAN   |
| Bayblend® R                        | PIR/PCR, PC+ABS  |
| Bayblend® RE                       | Sustainable PC+ABS with attributed bio-circular content, ISCC PLUS certified   |
| Desmopan®                          | TPU  |
| Desmopan® CQ EC                    | TPU bio-based solutions  |
| Desmopan® CQ MBC                   | TPU bio-circular / mass-balancing solutions  |
| Desmopan® CQ RC                    | TPU recycling solutions  |
| Makroblend®                        | PC+PBT, PC+PET   |
| Makroblend® RE                     | Sustainable PC+PET with attributed bio-circular content, ISCC PLUS certified   |
| Makrolon®                          | PC   |
| Makrolon® R                        | PIR/PCR, PC  |
| Makrolon® RE                       | Sustainable PC with attributed bio-circular content, ISCC PLUS certified   |
| Texin®                             | TPU  |
| Akulon®                            | PA66   |
| Akulon® ECO                        | PA66 with post-industrial glass fiber  |
| Durethan®                          | PA6  |
| Durethan® Blue                     | Combining PA6 derived from biomass or bio-waste with post-industrial glass fiber and available based on chemical recycling |
| Durethan® ECO                      | PA6 with post-industrial glass fiber   |
| Pocan®                             | PBT, PBT Blends  |
| Pocan® ECO                         | PBT with post-industrial glass fiber (ECO) and PBT bio circular, mass balanced in addition post-consumer PET (ECO T)       |

| <b>Product</b>      | <b>Description</b>  |
|---------------------|---|
| Clearlux®           | MABS  |
| K-Resin®            | SBC   |
| Luran®              | SAN   |
| Luran® ECO          | Sustainable SAN with attributed bio-circular content, ISCC PLUS certified                                     |
| Luran® HH           | AMSAN   |
| Luran® S            | ASA   |
| Luran® S ECO        | Sustainable ASA with attributed bio-circular content, ISCC PLUS certified                                     |
| Luran® S/C          | ASA+PC  |
| Lustran®            | ABS   |
| NAS®                | SMMA  |
| NAS® ECO            | Sustainable SMMA with attributed bio-circular content, ISCC PLUS certified                                    |
| Novodur®            | ABS   |
| Novodur® ECO        | Sustainable ABS based on either attributed bio-circular content, ISCC PLUS certified or mechanically recycled |
| Novodur® HD         | ABS (healthcare)  |
| Novodur® HD ECO     | Sustainable ABS with attributed bio-circular content, ISCC PLUS certified                                     |
| Novodur® HH         | ABS (high heat)   |
| Novodur® HH ECO     | Mechanically recycled ABS (high heat)   |
| Styreflex®          | SBC thermoplastic elastomer   |
| Styreflex® ECO      | Sustainable SBC with attributed bio-circular content, ISCC PLUS certified                                     |
| Styrolution® PS     | PS-GP, PS-HI  |
| Styrolution® PS ECO | Sustainable PS based on either attributed bio-circular content, ISCC PLUS certified or mechanically recycled  |
| Styrolux®           | SBC   |
| Styrolux® ECO       | Sustainable SBC with attributed bio-circular content, ISCC PLUS certified                                     |
| Terblend® N         | ABS + PA  |
| Terblend® S         | ASA + PA  |
| Terluran®           | ABS   |
| Terluran® ECO       | Sustainable ABS based on either attributed bio-circular content, ISCC PLUS certified or mechanically recycled |
| Terlux®             | MABS  |
| Terlux®ECO          | Sustainable MABS with attributed bio-circular content, ISCC PLUS certified                                    |
| Terlux® HD          | MABS (healthcare)   |
| Zylar®              | MBS   |
| Zylar®ECO           | Sustainable MBS with attributed bio-circular content, ISCC PLUS certified                                     |



| Product                  | Description   |
|--------------------------|---|
| Adflex™                  | PP-Catalloy   |
| Adstif™                  | PP (Homo, Copo) high stiffness  |
| Adsyl™                   | PP-Catalloy   |
| CirculenRecover          | Post consumer recycled PE & PP  |
| CirculenRenew            | Sustainable PP with attributed bio-circular content, ISCC PLUS certified  |
| CirculenRenew Plus       | Sustainable PP with attributed bio-circular content, ISCC PLUS certified, C14 verification of renewable content |
| CirculenRevive           | PE & PP based on advanced molecular recycling technology  |
| Clyrell™                 | PP (Copo, Raco) impact resistant  |
| Hifax™ (non-coloured)    | PP Catalloy   |
| Hiflex™                  | PE-Catalloy   |
| Histif™                  | PE-HD   |
| Hostalen™ (non-coloured) | PE-HD   |
| Hostalen™ PP             | PP (Homo, Copo, Raco)   |
| Koattro™                 | Polybutene (PB-1)   |
| Lucalen™                 | PE Copolymer  |
| Luflexen™                | PE-LLD  |
| Lupolen™                 | PE-LD, PE-MD, PE-HD   |
| Moplen™                  | PP (Homo, Copo, Raco)   |
| Petrothene™              | PE-HD based compound  |
| Purell™                  | PB-1, PE, PP (healthcare)   |
| Softell™ (non-coloured)  | PP-Catalloy   |
| Toppyl™                  | Polybutene (PB-1)   |
| Alcom®                   | Customer specific compound solutions based on various polymers (Prime and ECO based)                            |
| Alcom® 3D                | Applicable for production of filaments for Fused Deposition Modeling (FDM)                                      |
| Alcom® EC                | Electrically Conductive   |
| Alcom® LB                | Light blocking and high reflection  |
| Alcom® LD/LDDC/LG/LIR    | Light diffusion/Light diffusion deep colour/Light guiding/Light infrared  |
| Alcom® MED               | Medical, pharmaceutical and diagnostic applications   |
| Alcom® TC                | Thermally conductive  |
| Alcom® WP                | Wear protect  |
| Alfater XL®              | TPV (PP+EPDM)   |
| Alfater XL® ECO          | Sustainable solutions of TPV (PP+EPDM)  |
| Altech®                  | PA6, PA66, PP, PS, ABS, PC, PC Blends, SAN, etc.  |
| Altech® ECO/ IQ          | Sustainable solutions based on PA6, PA66, PP, PC, PC-Blends, ABS etc.   |
| Altech NXT PP®           | Glass fiber reinforced PP compounds   |
| Cellidor®                | CP, CAB based on Cellulose esters from sustainable sources  |
| Tedur®                   | Linear PPS  |
| WIC                      | PP, PA6, PA66 reinforced with recycled carbon fiber   |



**Product****Description**

|                             |   |
|-----------------------------|---|
| ECOTRIA® Claro              | Speciality PET  |
| ECOTRIA® Claro CR           | Speciality PET with a share of chemically recycled polymer content            |
| ECOTRIA® CR                 | Thermoplastic copolyester with a share of chemically recycled polymer content |
| ECOTRIA® R                  | Thermoplastic copolyester with a share of mechanically recycled PCR content   |
| ECOZEN® (series: T)         | Bio-modified copolyester  |
| SKYGREEN®                   | Copolyester PETG and PCTG grades  |
| SKYPET®                     | PETg  |
| SKYPET® CR                  | Chemically recycled PCR PET   |
| SKYPLETE® (series: E, G, L) | Product range for 3D-printing   |
| SKYPURA®                    | High temperature and high performance polyester PCT                           |
| SKYTRA®                     | Reinforced and flame retardant PET  |



|                 |  |
|-----------------|--|
| Amodel®         | PPA  |
| Amodel® Bios    | Partially bio-based PPA  |
| Amodel® ECHO RF | Up to 50 % recycled content from pre-consumer waste allocated using mass balance |
| Ixef®           | PARA   |
| Ixef® ECHO RF   | Up to 60 % recycled content from pre-consumer waste                              |
| Ixef® HC/GS     | For healthcare applications  |
| Kalix® /Omnix®  | HPPA   |
| Omnix® ECHO     | Up to 98% recycled resin and recycled glass fiber                                |
| Xencor™         | High performance long fiber thermoplastics of PA66, HPPA, PPA, PARA and PPS      |
| Xydar®          | LCP  |



|             |        |
|-------------|--------|
| Ultramid® S | PA6.10 |
|-------------|--------|



|             |                  |
|-------------|------------------|
| Evoprene®   | TPS              |
| Evoprene® R | TPS (healthcare) |



|                               |                      |
|-------------------------------|----------------------|
| Masterbatches for Polyolefins | Black-Masterbatch    |
|                               | White-Masterbatch    |
|                               | Additive-Masterbatch |
|                               | Color-Masterbatch    |



|                   |                           |
|-------------------|---------------------------|
| KYNAR® MED        | PVDF                      |
| PEBAX® MED        | TPA                       |
| RILSAMID® MED     | PA12                      |
| RILSAN® CLEAR MED | PA11 / PA12 (transparent) |
| RILSAN® MED       | PA11                      |

**Product**

Beki-Shield®

**Description**

Steel fiber batch



VESTAKEEP®

PEEK



Inoflar™

PVDF



GranaClean®

Cleaning granules



ECOTRAN®

Chlorine free PPS compounds



Post-Consumer Recycled Plastics (PCR)

ABS, HDPE, PP, PS, PC+ABS



Post-Consumer Recycled Plastics (PCR)

ABS, PS, PP, PC+ABS



Luranyl® HT

PPE + PA

Luranyl® KR

PPE + PS



Sipolprene®

TPC

Sipolprene® S

Sustainable TPC

Technipol® Bio

PBS, PBAT, PBSeb



Arboblend®

Lignin based polymers with natural fibers

Arbofill®

Combination of plastics and natural materials

Arboform®

Biopolymers with natural additives and natural fibers



Solplast®

TPS



Vampalloy®

PC+ABS FR, PA+PPS FR

Vampamid®

PA6 FR, PA66 FR

Vampcarb®

PC FR

Vamplen®

PP FR

Vamporan®

PPE FR

Vampsab®

ABS FR

Vampson®

PPS FR

Vampstyr®

PS FR

Vampsulf®

PSU FR

Vampter®

PBT FR, PC+PBT FR

Vampgreen™

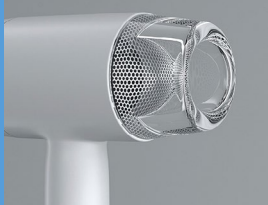
Flame retardant sustainable solutions based on ABS, PA6, PA66, PP

# The best solution for your industry



## Building & Construction

- Exterior and aesthetic interior spaces for functional design
- Antibacterial protection in sanitary facilities according to ISO 22196
- High understanding of the building and construction industry regulations



## Electrical & Electronics

- Light- and lighting technology:
  - Reflectors, diffusing discs, light guides, housings
  - Optics and lenses
  - Operating elements and displays
- EMI and ESD shielding elements
- Thermal conductive and flame retardant solutions for housings of electronics
- Components and housings for household appliances



## Healthcare

- Medical grade plastics according to VDI guideline 2017 MGP
- Polymers for medical devices, invitro diagnostics and pharmaceutical packaging as well as biopharma applications and laboratory equipment
- Customised compound solutions
- Support in regulatory questions



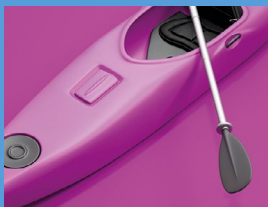
## Mobility

- Applications in e-mobility, railway and other transport systems
- Components for lighting systems
- Thermal management of components
- Lightweight applications (under the hood, vehicle interior)
- Aesthetical and structural parts
- Bellows and air ducts



## Packaging

- High expertise in cosmetic packaging
- Active and sustainable packaging concepts in food applications
- Bag in box systems and caps and closures
- Extended shelf life food packaging



## Sports & Leisure

- Huge array of high performance polymers for protective or lightweight design
- Solutions for protective gear, bikes, scooters etc.
- General outdoor equipment for every usage in an increasing array of sporting and leisure activities



## Sustainable Solutions

- Comprehensive portfolio for solutions on reduction of CO<sub>2</sub> footprint in plastic applications e.g. for automotive, packaging and E & E
- Bio based plastics, made by renewable raw material or by mechanical or chemical recycled material
- Closed loop solutions for supporting circular economy

#### **ALBIS worldwide**

Austria · Brazil · China · Czech Republic · Egypt  
France · Germany · Hungary · India · Israel  
Italy · Malaysia · Morocco · Netherlands  
Poland · Romania · Spain · Sweden  
Switzerland · Tunisia · Turkey · UK · Vietnam

#### **Contact us**

ALBIS BENELUX B.V.  
Paardeweide 2  
NL-4824 EH Breda  
T +31 (0)76 54 33 800  
albisenelux@albis.com  
**albis.com**

#### **Head Office**

ALBIS Distribution GmbH & Co. KG  
Mühlenhagen 35  
20539 Hamburg  
Germany  
T +49 40 78105 0  
info@albis.com  
**albis.com**

® indicates a registered trademark, ™ indicates an unregistered trademark, each belonging to the respective/indicated brand owner



Visit us on LinkedIn



Newsletter · Sign up

