

We drive  
polymer  
distribution.  
Easy, smart,  
passionate.



Product	Description
Ecovio®	PBAT, PLA
Ultradur®	PBT, PBT Blends
Ultradur® BMBcert®	Bio mass balanced PBT, PBT Blends
Ultradur® Ccycled®	Chemical recycled PBT, PBT Blends
Ultradur® RC	Mechanical recycled PBT based on PIR/PCR
Ultradur® rPCF	PBT with reduced Product Carbon Footprint
Ultraform®	POM
Ultraform® BMBcert®	Bio mass balanced POM
Ultramid® A, B, C, Balance	PA66, 6, 6/66, 6.10
Ultramid® BMBcert®	Bio mass balanced PA
Ultramid® Ccycled®	Chemical recycled PA
Ultramid® Expand	EPA
Ultramid® RC	Mechanical recycled PA based on PIR/PCR
Ultramid® rPCF	PA with reduced Product Carbon Footprint
Ultramid® T KR, 6000, 7000	PA6T/6, 66/6T, PA/PPA
Ultrason® E	PESU
Ultrason® P	PPSU
Ultrason® S	PSU
Apec®	PC-HT
Apec® RE	Sustainable PC-HT with attributed bio-circular content, ISCC PLUS certified
Bayblend®	PC+ABS, PC+ASA, PC+SAN
Bayblend® R	PIR/PCR, PC+ABS
Bayblend® RE	Sustainable PC+ABS with attributed bio-circular content, ISCC PLUS certified
Desmopan®	TPU
Desmopan® CQ EC	TPU bio-based solutions
Desmopan® CQ MBC	TPU bio-circular / mass-balancing solutions
Desmopan® CQ RC	TPU recycling solutions
Makroblend®	PC+PBT, PC+PET
Makroblend® RE	Sustainable PC+PET with attributed bio-circular content, ISCC PLUS certified
Makrolon®	PC
Makrolon® R	PIR/PCR, PC
Makrolon® RE	Sustainable PC with attributed bio-circular content, ISCC PLUS certified
Texin®	TPU
Akulon®	PA66
Akulon® ECO	PA66 with post-industrial glass fiber
Durethan®	PA6
Durethan® Blue	Combining PA6 derived from biomass or bio-waste with post-industrial glass fiber and available based on chemical recycling
Durethan® ECO	PA6 with post-industrial glass fiber
Pocan®	PBT, PBT Blends
Pocan® ECO	PBT with post-industrial glass fiber (ECO) and PBT bio circular, mass balanced in addition post-consumer PET (ECO T)
Xytron™	PPS

<b>Product</b>	<b>Description</b>
Clearlux®	MABS
K-Resin®	SBC
Luran®	SAN
Luran® ECO	Sustainable SAN with attributed bio-circular content, ISCC PLUS certified
Luran® HH	AMSAN
Luran® S	ASA
Luran® S ECO	Sustainable ASA with attributed bio-circular content, ISCC PLUS certified
Luran® S/C	ASA+PC
Lustran®	ABS
NAS®	SMMA
NAS® ECO	Sustainable SMMA with attributed bio-circular content, ISCC PLUS certified
Novodur®	ABS
Novodur® ECO	Sustainable ABS based on either attributed bio-circular content, ISCC PLUS certified or mechanically recycled
Novodur® HD	ABS (healthcare)
Novodur® HD ECO	Sustainable ABS with attributed bio-circular content, ISCC PLUS certified
Novodur® HH	ABS (high heat)
Novodur® HH ECO	Mechanically recycled ABS (high heat)
Styroflex®	SBC thermoplastic elastomer
Styroflex® ECO	Sustainable SBC with attributed bio-circular content, ISCC PLUS certified
Styrolution® PS	PS-GP, PS-HI
Styrolution® PS ECO	Sustainable PS based on either attributed bio-circular content, ISCC PLUS certified or mechanically recycled
Styrolux®	SBC
Styrolux® ECO	Sustainable SBC with attributed bio-circular content, ISCC PLUS certified
Terblend® N	ABS + PA
Terblend® S	ASA + PA
Terluran®	ABS
Terluran® ECO	Sustainable ABS based on either attributed bio-circular content, ISCC PLUS certified or mechanically recycled
Terlux®	MABS
Terlux®ECO	Sustainable MABS with attributed bio-circular content, ISCC PLUS certified
Terlux® HD	MABS (healthcare)
Zylar®	MBS
Zylar®ECO	Sustainable MBS with attributed bio-circular content, ISCC PLUS certified



Product	Description
Adflex™	PP-Catalloy
Adstif™	PP (Homo, Copo) high stiffness
Adsyl™	PP-Catalloy
CirculenRecover	Post consumer recycled PE & PP
CirculenRenew	Sustainable PP with attributed bio-circular content, ISCC PLUS certified
CirculenRenew Plus	Sustainable PP with attributed bio-circular content, ISCC PLUS certified, C14 verification of renewable content
CirculenRevive	PE & PP based on advanced molecular recycling technology
Clyrell™	PP (Copo, Raco) impact resistant
Hifax™ (non-coloured)	PE-Catalloy
Hiflex™	PE-Catalloy
Histif™	PE-HD
Hostalen™ (non-coloured)	PE-HD
Hostalen™ PP	PP (Homo, Copo, Raco)
Koattro™	Polybutene (PB-1)
Lucalen™	PE Copolymer
Luflexen™	PE-LLD
Lupolen™	PE-LD, PE-MD, PE-HD
Moplen™	PP (Homo, Copo, Raco)
Petrothene™	PE-HD based compound
Purell™	PB-1, PE, PP (healthcare)
Softell™ (non-coloured)	PP-Catalloy
Toppyl™	Polybutene (PB-1)
Alcom®	Customer specific compound solutions based on various polymers (Prime and ECO based)
Alcom® 3D	Applicable for production of filaments for Fused Deposition Modeling (FDM)
Alcom® EC	Electrically Conductive
Alcom® LB	Light blocking and high reflection
Alcom® LD/LDDC/LG/LIR	Light diffusion /Light diffusion deep colour /Light guiding / Light infrared
Alcom® MED	Medical, pharmaceutical and diagnostic applications
Alcom® TC	Thermally conductive
Alcom® WP	Wear protect
Alfater XL®	TPV (PP+EPDM )
Alfater XL® ECO	Sustainable solutions of TPV (PP+EPDM)
Altech®	PA6, PA66, PP, PS, ABS, PC, PC Blends, SAN, etc.
Altech® ECO / IQ	Sustainable solutions based on PA6, PA66, PP, PC, PC-Blends, ABS etc.
Altech NXT PP®	Glass fiber reinforced PP compounds
Cellidor®	CP, CAB based on Cellulose esters from sustainable sources
Tedur®	Linear PPS
WIC	PP, PA6, PA66 reinforced with recycled carbon fiber





Product	Description
ECOTRIA® Claro	Speciality PET
ECOTRIA® Claro CR	Speciality PET with a share of chemically recycled polymer content
ECOTRIA® CR	Thermoplastic copolyester with a share of chemically recycled polymer content
ECOTRIA® R	Thermoplastic copolyester with a share of mechanically recycled PCR content
ECOZEN® (series: T)	Bio-modified copolyester
SKYGREEN®	Copolyester PETG and PCTG grades
SKYPET®	PETg
SKYPET® CR	Chemically recycled PCR PET
SKYLETE® (series: E, G, L)	Product range for 3D-printing
SKYPURA®	High temperature and high performance polyester PCT
SKYTRA®	Reinforced and flame retardant PET



Amodel®	PPA
Amodel® Bios	Partially bio-based PPA
Amodel® ECHO RF	Up to 50 % recycled content from pre-consumer waste allocated using mass balance
Ixef®	PARA
Ixef® ECHO RF	Up to 60 % recycled content from pre-consumer waste
Ixef® HC/GS	for healthcare applications
Kalix® /Omnix®	HPPA
Omnix® ECHO	Up to 98 % recycled resin and recycled glass fiber
Xencor™	High performance long fiber thermoplastics of PA66, HPPA, PPA, PARA and PPS
Xydar®	LCP



Ultramid® S	PA6.10
-------------	--------



Evoprene®	TPS
Evoprene® R	TPS (healthcare)



KYNAR® MED	PVDF
PEBAX® MED	TPA
RILSAMID® MED	PA12
RILSAN® CLEAR MED	PA11 / PA12 (transparent)
RILSAN® MED	PA11



Beki-Shield®	Steel fiber batch
--------------	-------------------



VESTAKEEP®	PEEK
------------	------



**GRANULA POLYMER**

**HDC POLYALL**



**RÖHM**



**Product**

**Description**

Inoflar™

PVDF

GranaClean®

Cleaning granules

ECOTRAN®

Chlorine free PPS compounds

Post-Consumer Recycled Plastics (PCR)

ABS, HDPE, PP, PS, PC+ABS

Post-Consumer Recycled Plastics (PCR)

ABS, PS, PP, PC+ABS

PLEXIGLAS®

Standard PMMA molding compounds

PLEXIGLAS® Heatresist

High heat deflection temperature under load PMMA molding compounds

PLEXIGLAS® Hi-Gloss

High brilliance PMMA molding compounds

PLEXIGLAS® Optical HT

High optical quality and increased long-term service temperature PMMA molding compounds

PLEXIGLAS® proTerra

Reduced carbon footprint PMMA molding compounds

PLEXIGLAS® Resist

Impact-modified PMMA molding compounds

PLEXIMID®

Very high heat deflection temperature under load PMMI molding compounds

Luranyl® HT

PPE + PA

Luranyl® KR

PPE + PS

Sipolprene®

TPC

Sipolprene® S

Sustainable TPC

Technipol® Bio

PBS, PBAT, PBSeb

Arboblend®

Lignin based polymers with natural fibers

Arbofill®

Combination of plastics and natural materials

Arboform®

Biopolymers with natural additives and natural fibers

Solplast®

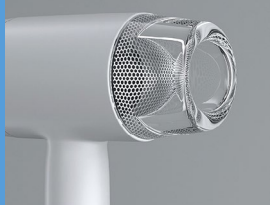
TPS

# The best solution for your industry



## Building & Construction

- Exterior and aesthetic interior spaces for functional design
- Antibacterial protection in sanitary facilities according to ISO 22196
- High understanding of the building and construction industry regulations



## Electrical & Electronics

- Light- and lighting technology:
  - Reflectors, diffusing discs, light guides, housings
  - Optics and lenses
  - Operating elements and displays
- EMI and ESD shielding elements
- Thermal conductive and flame retardant solutions for housings of electronics
- Components and housings for household appliances



## Healthcare

- Medical grade plastics according to VDI guideline 2017 MGP
- Polymers for medical devices, invitro diagnostics and pharmaceutical packaging as well as biopharma applications and laboratory equipment
- Customised compound solutions
- Support in regulatory questions



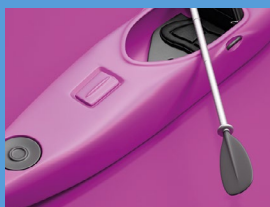
## Mobility

- Applications in e-mobility, railway and other transport systems
- Components for lighting systems
- Thermal management of components
- Lightweight applications (under the hood, vehicle interior)
- Aesthetical and structural parts
- Bellows and air ducts



## Packaging

- High expertise in cosmetic packaging
- Active and sustainable packaging concepts in food applications
- Bag in box systems and caps and closures
- Extended shelf life food packaging



## Sports & Leisure

- Huge array of high performance polymers for protective or lightweight design
- Solutions for protective gear, bikes, scooters etc.
- General outdoor equipment for every usage in an increasing array of sporting and leisure activities



## Sustainable Solutions

- Comprehensive portfolio for solutions on reduction of CO<sub>2</sub> footprint in plastic applications e.g. for automotive, packaging and E & E
- Bio based plastics, made by renewable raw material or by mechanical or chemical recycled material
- Closed loop solutions for supporting circular economy

#### **ALBIS worldwide**

Austria · Brazil · China · Czech Republic · Egypt  
France · Germany · Hungary · India · Israel  
Italy · Malaysia · Morocco · Netherlands  
Poland · Romania · Spain · Sweden  
Switzerland · Tunisia · Turkey · UK · Vietnam

#### **Contact us**

ALBIS (U.K.) Ltd.  
LGA No. 5 Booths Park, Chelford Road  
Knutsford, Cheshire WA16 8GS  
T +44 1565 755777  
albisuk@albis.com  
**albis.com**

#### **Head Office**

ALBIS Distribution GmbH & Co. KG  
Mühlenhagen 35  
20539 Hamburg  
Germany  
T +49 40 78105 0  
info@albis.com  
**albis.com**

® indicates a registered trademark, ™ indicates an unregistered trademark, each belonging to the respective/indicated brand owner



Visit us on LinkedIn



Newsletter · Sign up

